

**Product Name**  
Monoclonal Mouse  
Anti-Modified Citrulline (AMC),  
Immunoglobulin, clone C4S



**CAT No.**  
MQR1.602-100

**Size**  
100 µg

**POSTAL ADDRESS** Pivot Park  
Industrielaan 63  
5349 AE Oss  
The Netherlands

**TELEPHONE** +31 (0) 412 846 000  
**FAX** +31 (0) 412 846 009

**E-MAIL** [sales@modiquestresearch.com](mailto:sales@modiquestresearch.com)  
**WEBSITE** [www.modiquestresearch.com](http://www.modiquestresearch.com)

Edition: August 6, 2014

#### Intended use

This product is for research use only. NOT for use in diagnostic or therapeutic procedures.  
This product is tested for use in enzyme-linked immunosorbent assay (ELISA) and Western Blot (WB).

#### Reagent provided

The antibody is supplied in PBS.

#### Isotype

Mouse IgG2a, κ

#### Immunogen

Citrulline-containing peptide modified with 2,3-butanedione monoxime and antipyrine.

#### Specificity

Specificity has been tested in ELISA (figure 1) and WB (figure 2). Recognizes citrulline-containing proteins modified with 2,3-butanedione monoxime and antipyrine regardless of neighbouring amino acid sequences.

#### Purity

Protein A purified.

#### Precautions

1. For professional users.
2. As with any product derived from biological sources, proper handling procedures should be used.
3. The product may be used in different techniques and in combination with different sample types and materials, therefore each individual laboratory should validate the applied test system.

#### Preparation of the antibody

Use antibody as supplied.

#### Storage instructions

Store at -80°C.

#### Application guidelines

**ELISA:** 0.08 – 0.5 µg/ml

**WB:** 1 µg/ml

Unless the stability in the actual test system has been established, it is recommended to dilute the product immediately before use.

#### Relevance

This antibody is developed for the detection of citrulline containing proteins. The amino acid citrulline is generated by posttranslational modification of arginine by peptidylarginine-deiminases (PADs; MQ16.201 and MQ16.203). Antibodies directed to citrulline containing proteins (e.g. histones) are detected in rheumatoid arthritis patients.

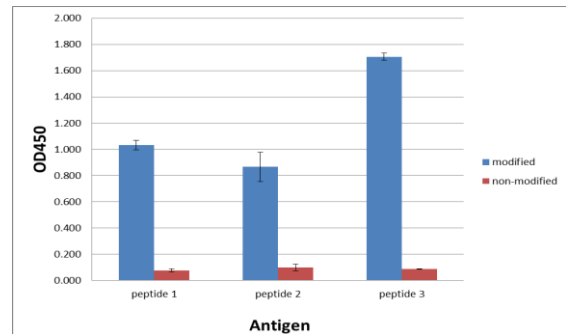


Figure 1: Specificity of AMC Immunoglobulin (MQR1.602), determined by ELISA. Antibody diluted to 0.4 µg/ml in PBS containing 0.05% tween-20 and 1% BSA was tested on various modified citrulline-containing peptides and their non-modified forms.

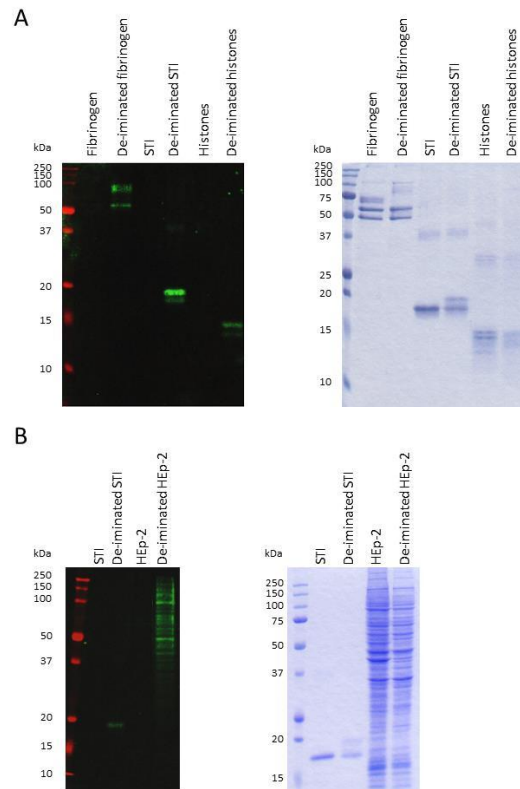


Figure 2: Specificity of AMC Immunoglobulin (MQR1.602, 1 µg/ml, diluted in PBS containing 0.05% tween-20 and 5% milk powder), was determined by WB.

A) After blotting, the proteins on the membrane (fibrinogen, soybean trypsin inhibitor (STI), histones and their de-inated forms) were chemically modified with 2,3-butanedione monoxime and antipyrine. Subsequently, the membrane was probed with AMC antibody. The right panel shows the corresponding SDS-PAGE gel stained with coomassie.

B) AMC antibody was tested on 10 µg HEP-2 cell lysate and 10 µg of its de-inated form after chemical modification of the proteins on the membrane with 2,3-butanedione monoxime and antipyrine (left panel). As control (de-inated) STI was loaded. The right panel shows the corresponding SDS-PAGE gel stained with coomassie.