

Product Name

Monoclonal Mouse
Anti-Collagenase from *Clostridium histolyticum*,
Immunoglobulin, clone 7H43F2-12092

ModiQUEST
RESEARCH

CAT No.

MQ 5.202-100

POSTAL ADDRESS Industrielaan 63
5349 AE Oss
The Netherlands

LOT No.

12092

TELEPHONE +31 (0) 412 – 846 000
FAX +31 (0) 412 – 846 009

Size

100 µg

E-MAIL sales@modiquestresearch.com
WEBSITE www.modiquestresearch.com

Edition: March 20th, 2013

Intended use

This product is for research use only. NOT for use in diagnostic or therapeutic procedures.
This product is tested for use in enzyme-linked immunosorbent assay (ELISA) and Western Blot (WB).

Reagent provided

The antibody is supplied in PBS, pH 7.2 + 50 mM Tris, pH 8.5
Antibody concentration: 0.68 mg/ml

Immunogen

Collagenase from *Clostridium histolyticum*, type H (Sigma-Aldrich, C8051).

Specificity

Specificity has been tested in ELISA (figure 1) and WB (figure 2). Additional tests for cross reactivity have not yet been performed.

Purity

Protein A purified.

Precautions

1. For professional users.
2. As with any product derived from biological sources, proper handling procedures should be used.
3. The product may be used in different techniques and in combination with different sample types and materials, therefore each individual laboratory should validate the applied test system.

Preparation of the antibody

Use antibody as supplied.

Storage instructions

Store at <-20°C.

Dilution guidelines

ELISA: 1:200 – 1:1000

WB: 1:2000 – 1:5000

Unless the stability in the actual test system has been established, it is recommended to dilute the product immediately before use.

Relevance

This Collagenase is typically used with a neutral protease for tissue disruption.

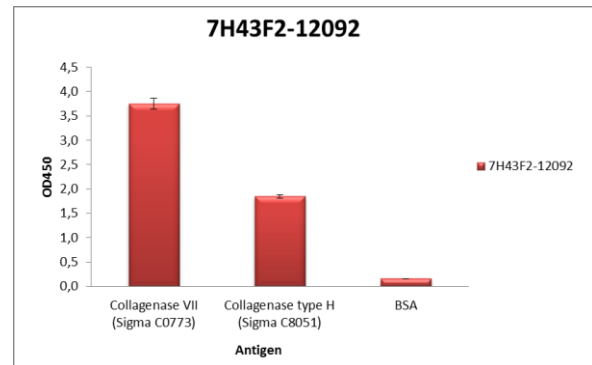


Figure 1: Specificity of Anti-Collagenase from *clostridium histolyticum* type H (Sigma-Aldrich, C8051) Immunoglobulin, clone 7H43F2-12092, determined by ELISA. Antibody fraction (0.68 mg/ml) 200X diluted in PBS containing 0.05% tween-20 and 5% BSA. Antibody was tested on various substrates i.e. collagenase VII (Sigma-Aldrich, C0773), collagenase type H (Sigma-Aldrich, C8051), and BSA, 98% (Sigma).

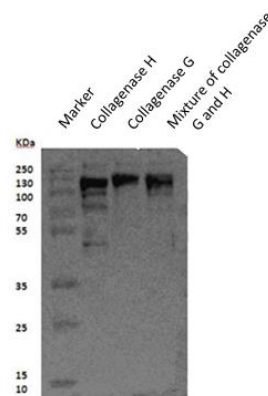


Figure 2: Specificity of Anti-Collagenase MQ5.202 (from *clostridium histolyticum* type H, Sigma-Aldrich, C8051) Immunoglobulin, clone 7H43F2-12092, determined by western blot. Antibody fraction (0.68 mg/ml) was used 5000X diluted. Antibody was tested on various substrates i.e. collagenase G, and collagenase type H.