

Product Name

Monoclonal Human
Anti-Bromodomain and PHD finger-containing
protein 3 (BRPF3) immunoglobulin

CAT No.

MQR2.1401

LOT No.

16218

Size

100 µg

Edition: May 30, 2017

POSTAL ADDRESS Pivot Park
Industrielaan 63
5349 AE Oss
The Netherlands

TELEPHONE +31 (0) 412 – 846 000
FAX +31 (0) 412 – 846 009

E-MAIL sales@modiquestresearch.com
WEBSITE www.modiquestresearch.com

Intended use

This product is for research use only. NOT for use in diagnostic or therapeutic procedures.

This product is tested for use in enzyme-linked immunosorbent assay (ELISA), immunoprecipitation (IP), and Chromatin immunoprecipitation quantitative real-time PCR (ChIP-qPCR).

Reagent provided

The antibody is supplied in PBS

Isotype

Human IgG1κ

Immunogen

Human bromodomain-containing protein 4 isoform long (333-460 of 1362)

Specificity

Specificity has been tested in ELISA (figure 1), IP-MS and ChIP-qPCR.

Purity

Protein A purified.

Precautions

1. For professional users.
2. As with any product derived from biological sources, proper handling procedures should be used.
3. The product may be used in different techniques and in combination with different sample types and materials, therefore each individual laboratory should validate the applied test system.

Preparation of the antibody

Use antibody as supplied.

Storage instructions

Store at -20°C.

Application guidelines

ELISA: 1:5000 – 1:25000

IP: 2 µg/ml

Unless the stability in the actual test system has been established, it is recommended to dilute the product immediately before use.

Relevance

Component of the MOZ/MORF complex which has a histone H3 acetyltransferase activity.¹

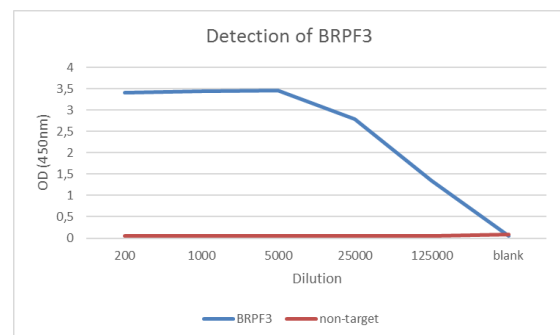


Figure 1: Specificity of BRPF3 (MQR2.1401), determined by ELISA. Antibody diluted in PBS containing 0.05% tween-20 and 1% BSA was tested on human BRPF3 and PRMT3 (non-target).

References

- 1) UniProt Consortium 2017, 'Bromodomain and PHD finger-containing protein 3', UniProtKB Protein Knowledgebase, viewed 12 May 2017, <http://www.uniprot.org/uniprot/Q9ULD4>