

Product Name
Monoclonal Human
Anti-Histone lysine demethylase PHF8



CAT No.
MQR2.2001

LOT No.
16214

Size
100 µg

POSTAL ADDRESS Pivot Park
Industrielaan 63
5349 AE Oss
The Netherlands

TELEPHONE +31 (0) 412 – 846 000
FAX +31 (0) 412 – 846 009

E-MAIL sales@modiquestresearch.com
WEBSITE www.modiquestresearch.com

Edition: February 2nd, 2018

Intended use

This product is for research use only. NOT for use in diagnostic or therapeutic procedures.
This product is tested for use in enzyme-linked immunosorbent assay (ELISA) and immunoprecipitation (IP).

Reagent provided

The antibody is supplied in PBS.

Isotype

Human IgG1κ

Immunogen

Histone lysine demethylase PHF8 (37-483 of 1060, JmjC)

Specificity

Specificity has been tested in ELISA (figure 1) and IP-MS.

Purity

Protein A purified.

Precautions

1. For professional users.
2. As with any product derived from biological sources, proper handling procedures should be used.
3. The product may be used in different techniques and in combination with different sample types and materials, therefore each individual laboratory should validate the applied test system.

Preparation of the antibody

Use antibody as supplied.

Storage instructions

Store at -20°C.

Application guidelines

ELISA: 1:200 – 1:5000

IP: 2 µg/ml

Unless the stability in the actual test system has been established, it is recommended to dilute the product immediately before use.

Relevance

Histone lysine demethylase with selectivity for the di- and monomethyl states that plays a key role cell cycle progression, rDNA transcription and brain development.¹

Detection of PHF8

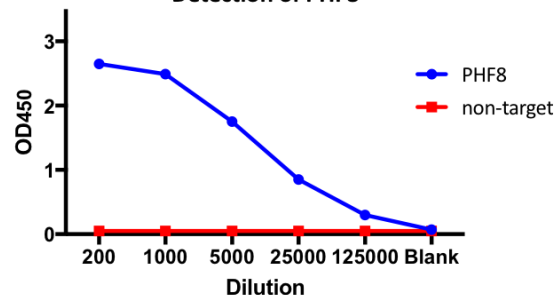


Figure 1: Specificity of anti-PHF8 (MQR2.2001), determined by ELISA. Antibody diluted in PBS containing 0.05% tween-20 and 1% BSA was tested on human PHF8 and SA (non-target).

References

- 1) <http://www.uniprot.org/uniprot/Q9UUP1>